



The men's fleece jacket

Medium Fit

S → 5XL*

300 GSM

Description

Stand-up collar

Back neck tape with loop

Nylon coil zip with metal puller and cord ending

Set-in sleeves

Zippered welt pockets

Recycled elastic binding at collar edge, sleeve cuffs and hem

Brushed fabric with anti-pilling on both sides

Composition

Shell - Polar Fleece

100% Polyester - Recycled - 300.0 GSM

Brushed, Anti piling

Care instruction

Wash similar colours together. No ironing. Close all snaps before washing. Line dry.



Country of origin

Weaving : China

Dyeing : China

Assembly : Bangladesh

Colors



Black
C002



French
Navy
C727



Burgundy
C244



Mindful
Blue
C729



Stargazer
C702



Khaki
C223

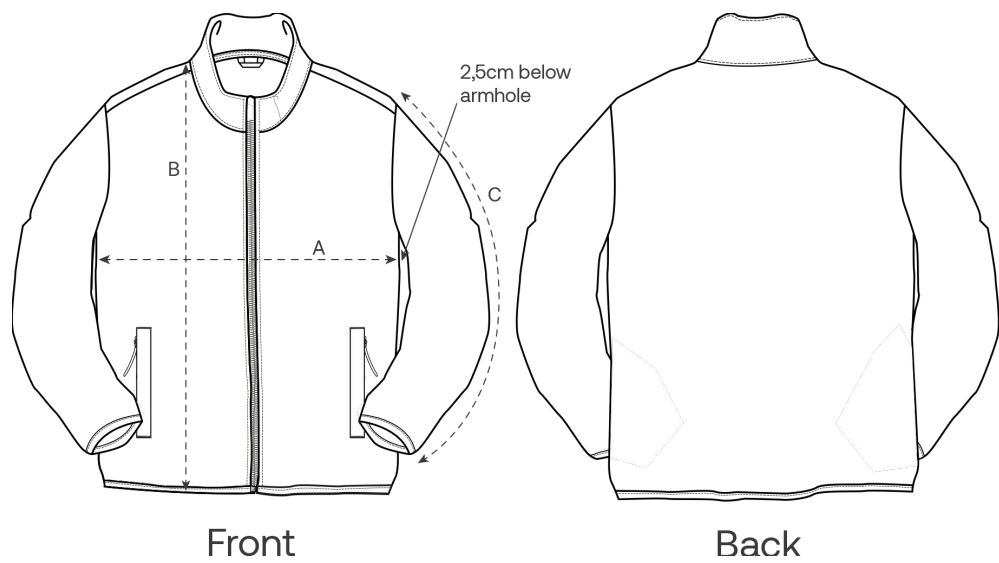


Desert
Dust
C028



Anthracite
C263

Size Guide



Measurement in cm	S	M	L	XL	XXL	3XL	4XL	5XL
A - Half Chest	53	56	59	62	66	70	75	80
C - Sleeve Length	63.5	65	66.5	68	69.5	69.5	69.5	69.5
B - Length	70	72	74	76.5	78.5	81	82	83

Packing

Sizes	S	M	L	XL	XXL	3XL	4XL	5XL
Pieces / bag	5	5	5	5	5	5	5	5
Pieces / box	10	10	10	10	10	10	10	10