



The men's body warmer

Fitted S → 5XL* 75 GSM

Description

- Sleeveless
- High collar
- Reverse nylon zip at center front
- Zippered welt pockets with extra grosgrain puller
- Elastic tape binding at armhole
- Fully quilted
- Side panels for better shape
- Inside seams with binding finish
- Bottom hem with adjustable plastic stopper and elastic cord

Composition

- Shell - Plain Weave
- 100% Polyester - Recycled - 75.0 GSM
- Fluorine-free DWR
- Padding
- 100% Polyester - Recycled -
- Lining - Plain Weave
- 100% Polyester - Recycled
- Fluorine-free DWR

Care instruction

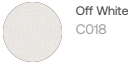
Wash similar colours together, no ironing, wash inside out. Close all zips before washing.



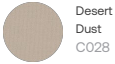
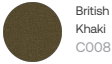
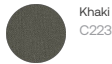
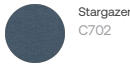
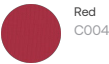
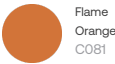
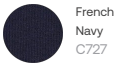
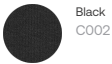
Country of origin

- Weaving : China
- Dyeing : China
- Assembly : Bangladesh or China

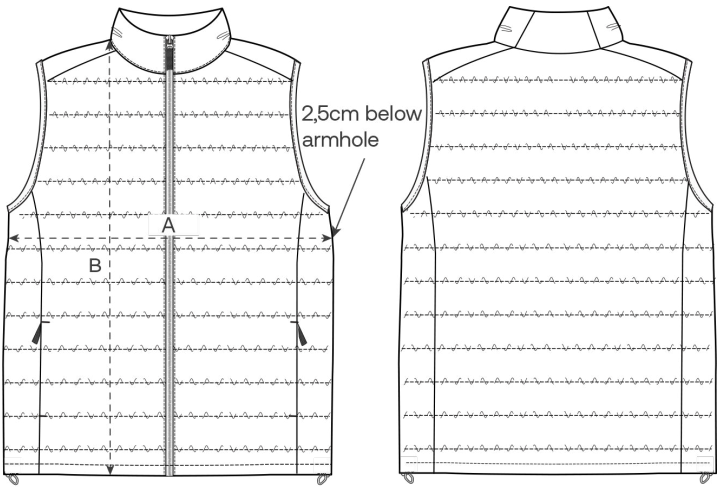
Whites



Colors



Size Guide



Front

Back

Measurement in cm	S	M	L	XL	XXL	3XL	4XL	5XL
A - Half Chest	53.5	56	59.5	63	66.5	70	74	80
B - Body Length	65	68.5	70.5	72.5	74.5	76.5	78.5	80.5

Packing

Sizes	S	M	L	XL	XXL	3XL	4XL	5XL
Pieces / bag	5	5	5	5	5	5	5	5
Pieces / box	10	10	10	10	10	10	10	10