



The women's softshell jacket

Medium Fit XS → XXL 342 GSM

Description

- Stand-up collar
- Nylon reverse coil zip at centre front
- Set-in sleeves
- Zipped welt pockets with reflective elastic pullers
- Adjustable Velcro sleeve openings
- Adjustable hem with elastic cord and plastic stoppers
- All inside seams finished with recycled binding
- Anti-pilling fleece lining
- Fully bonded 3-layer fabric with recycled TPU membrane
- Bi-stretch softshell fabric for improved fit and shape retention
- Water repellent up to 10,000 mm with Bionic Finish® Eco
- Breathable up to 3,000 g/m²/24hrs
- Windproof

Composition

- Shell - Balanced Plain weave, Bonded
- 94% Polyester - Recycled, 6% Elastane - 342.0 GSM
- Fluorine-free DWR
- Lining - Polar Fleece
- 100% Polyester - Recycled
- Brushed, Anti piling

Care instruction

Machine wash cold, wash similar colours together, no ironing, no tumble dry, do not dry clean



Country of origin

- Weaving : China
- Dyeing : China
- Assembly : China

Colors



Black
C002



French
Navy
C727

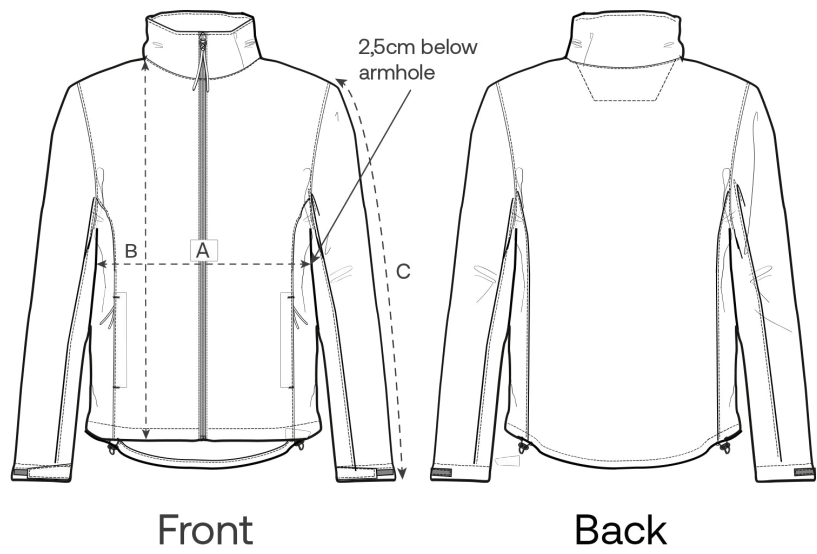


Stargazer
C702



Anthracite
C253

Size Guide



| Measurement in cm | XS | S | M | L | XL | XXL |
|-------------------|------|----|------|----|------|------|
| A - Half Chest | 47 | 50 | 53 | 56 | 59 | 63 |
| B - Body Length | 61 | 63 | 65 | 67 | 69 | 71 |
| C - Sleeve Length | 59.5 | 61 | 62.5 | 64 | 65.5 | 66.5 |

Packing

| Sizes | XS | S | M | L | XL | XXL |
|--------------|----|----|----|----|----|-----|
| Pieces / bag | 5 | 5 | 5 | 5 | 5 | 5 |
| Pieces / box | 10 | 10 | 10 | 10 | 10 | 10 |