



The women's sleeveless softshell jacket

Fitted XS → XXL 315 GSM

Description

- Stand-up collar
- Nylon reverse coil zip at centre front
- Zipped welt pockets with reflective elastic pullers
- Adjustable hem with elastic cord and plastic stoppers
- All inside seams finished with recycled binding
- Anti-pilling fleece lining
- Fully bonded 3-layer fabric with recycled TPU membrane
- Bi-stretch softshell fabric for improved fit and shape retention
- Water repellent up to 10,000 mm with Bionic Finish® Eco
- Breathable up to 3,000 g/m²/24hrs
- Windproof

Composition

- Shell - Balanced Plain weave, Bonded
- 94% Recycled Polyester - 6% Elastane - 315.0 GSM
- Fluorine-free DWR
- Lining - Polar Fleece
- 100% Polyester - Recycled
- Brushed, Anti piling

Care instruction

Wash similar colours together. No ironing. Close all snaps before washing. Line dry.



Country of origin

- Weaving : China
- Dyeing : China
- Assembly : Bangladesh

Colors



Black
C002



French
Navy
C727

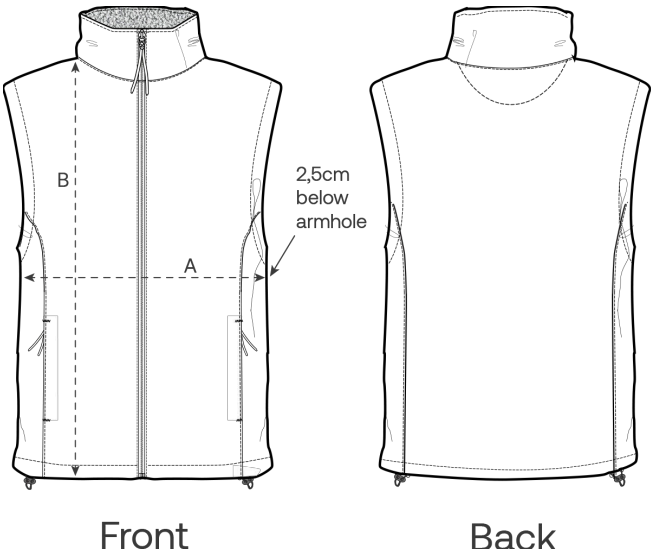


Stargazer
C702



Anthracite
C253

Size Guide



Measurement in cm	XS	S	M	L	XL	XXL
A - Half Chest	44	47	50	53	56	60
B - Body Length	61	63	65	67	69	71

Packing

Sizes	XS	S	M	L	XL	XXL
Pieces / bag	5	5	5	5	5	5
Pieces / box	20	20	20	20	20	20