



The women's sleeveless fleece jacket

Fitted

XS → XXL

300 GSM

Description

- Stand-up collar
- Back neck tape with loop
- Nylon coil zip with metal puller and cord ending
- Zipped welt pockets
- Recycled elastic binding at neckline, armholes and hem
- Brushed fabric with anti-pilling on both sides

Composition

- Shell - Polar Fleece
- 100% Polyester - Recycled - 300.0 GSM
- Brushed, Anti piling

Care instruction

Wash similar colours together. No ironing. Close all snaps before washing. Line dry.



Country of origin

- Weaving : China
- Dyeing : China
- Assembly : Bangladesh

Colors



Black  
C002



French  
Navy  
C727



Burgundy  
C244



Mindful  
Blue  
C729



Stargazer  
C702



Khaki  
C223

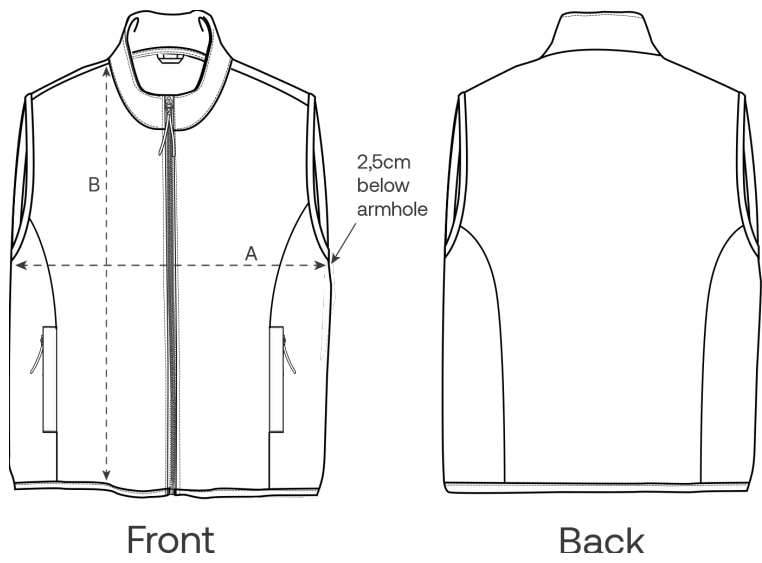


Desert  
Dust  
C028



Anthracite  
C263

Size Guide



Measurement in cm	XS	S	M	L	XL	XXL
A - Half Chest	45	48	51	54	58	62
B - Body Length	59	62	64	66	68	70

Packing

Sizes	XS	S	M	L	XL	XXL
Pieces / bag	5	5	5	5	5	5
Pieces / box	15	15	15	15	15	15