



The kids' Iconic polo

Medium Fit	3-4/98-104cm → 12-13/152-158cm	220 GSM
------------	--------------------------------	---------

Description

- Flat rib-knit collar and sleeve cuffs
- Single-jersey back neck tape
- Two-button front placket with buttons in matching colour
- Set-in sleeves
- Side slits with heavy single-jersey facing
- Single-needle topstitching at shoulder seams
- Narrow twin-needle topstitching at hem
- Drop-tail hem

Composition

- Shell - Piqué
- 100% Cotton - Organic Ring Spun Combed - 220.0 GSM
- Fabric washed

Care instruction

Wash similar colours together, do not iron on print, wash and iron inside out.



Country of origin

- Weaving : Bangladesh
- Dyeing : Bangladesh
- Assembly : Bangladesh

Whites



White
C001



Natural
Raw
C054

Colors



French
Navy
C727



Red
C004



Orchid
Flower
C068



Royal Blue
C230



Sky blue
C232



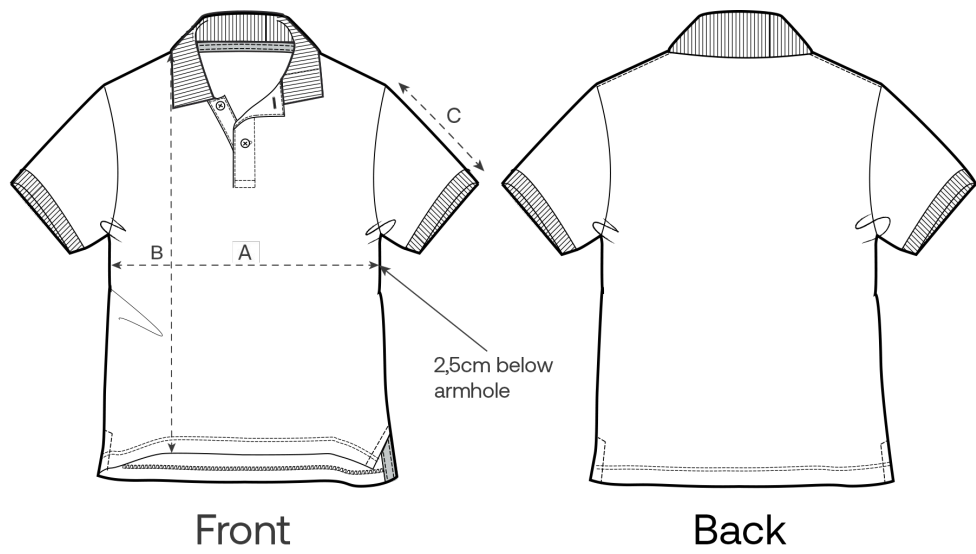
Glazed
Green
C036

Essential Heathers



Heather
Grey
C250

Size Guide



Measurement in cm	3-4/98-104cm	5-6/110-116cm	7-8/122-128cm	9-11/134-146cm	12-13/152-158cm
A - Half Chest	33	35	37	40.5	43.5
B - Body Length	42	46	50	56	61
C - Sleeve Length	12	13	14	17	19

Packing

Sizes	3-4/98-104cm	5-6/110-116cm	7-8/122-128cm	9-11/134-146cm	12-13/152-158cm
Pieces / bag	5	5	5	5	5
Pieces / box	50	50	50	50	50

Environmental impact for sizes 3-4 years

Please note that the table below shows data for a child aged 3 to 4 years.

Carbon emission in Kg CO2eq	Natural Raw	Eco-heather	Whites & Colours	Heathers*
From cradle to gate ¹	1.07	-	1.29	1.3
From cradle to grave ²	2.89	-	3.11	3.12

Water usage in m³	Natural Raw	Eco-heather	Whites & Colours	Heathers*
From cradle to gate ¹	0.41	-	0.61	0.68
From cradle to grave ²	1.41	-	1.59	1.66

Environmental impact for sizes 9-11 years

Please note that the table below shows data for a child aged 9 to 11 years.

Carbon emission in Kg CO2eq	Natural Raw	Eco-heather	Whites & Colours	Heathers*
From cradle to gate ¹	1.52	-	1.85	1.86
From cradle to grave ²	3.6	-	3.91	3.92

Water usage in m³	Natural Raw	Eco-heather	Whites & Colours	Heathers*
From cradle to gate ¹	0.59	-	0.89	0.99
From cradle to grave ²	1.81	-	2.09	2.18

1 - From the extraction of raw materials to the point it leaves the manufacturer. 2 - From the extraction of raw materials to the product end-of-life. * Except Heather Haze