



The Men's Mid-light Polo

Fitted S → 5XL* 185 GSM

Description

- Set-in sleeve
- Flat knit rib on collar and sleeve hem
- Inside heavy single jersey back neck tape
- Front inserted placket with 2 buttons in matching body colour
- Slit and bartack finish at side seam hem
- Double needle topstitch at shoulder seams
- Bottom hem with narrow double needle topstitch

Composition

Shell - Piqué
100% Cotton - Organic Ring Spun Combed - 185.0 GSM
Panel washed

Care instruction

Wash similar colours together, no ironing on print, wash and iron inside out.



Country of origin

Weaving : Bangladesh
Dyeing : Bangladesh
Assembly : Bangladesh



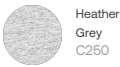
Whites



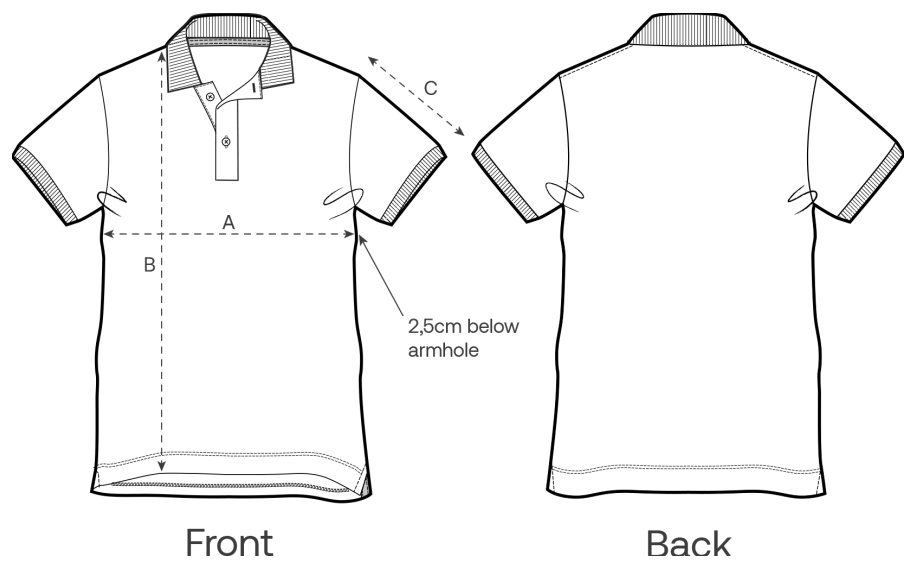
Colors



Essential Heathers



Size Guide



Measurement in cm	S	M	L	XL	XXL	3XL	4XL	5XL
A - Half Chest	48	51	54	57	61	65	70	75
B - Body Length	70	72	74	76	78	80	82	83
C - Sleeve Length	21	21.5	22	22.5	23	23.5	23.5	23.5

Packing

Sizes	S	M	L	XL	XXL	3XL	4XL	5XL
Pieces / bag	5	5	5	5	5	5	5	5
Pieces / box	50	50	50	50	50	25	25	25

Environmental impact

Please note that the table below shows data for an adult in size M.

Carbon emission in Kg CO2eq	Natural Raw	Eco-heather	Whites & Colours	Heathers*
From cradle to gate ¹	2.14	-	2.69	2.7
From cradle to grave ²	4.51	-	5.06	5.07

Water usage in m³	Natural Raw	Eco-heather	Whites & Colours	Heathers*
From cradle to gate ¹	0.9	-	1.37	1.5
From cradle to grave ²	2.35	-	2.83	2.96

1 - From the extraction of raw materials to the point it leaves the manufacturer. 2 - From the extraction of raw materials to the product end-of-life. * Except Heather Haze