



The babies' Iconic hoodie

Medium Fit	6-12 m/68-80cm → 24-36 m/92-98cm	280 GSM
------------	----------------------------------	---------

Description

- Double-layered hood in self-fabric
- Wider neckline opening for easy dressing
- Single-jersey back neck tape
- Self-fabric half-moon at back neck
- Set-in sleeves
- Single-needle topstitching at neckline and along hood opening
- 1x1 rib at sleeve cuffs and hem with twin-needle topstitching

Composition

- Shell - French Terry
- 85% Cotton - Organic Ring Spun Combed, 15% Polyester - Recycled - 280.0 GSM
- Fabric washed, Light sueded

Care instruction

Wash similar colours together, no ironing on print, wash and iron inside out.



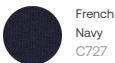
Country of origin

- Weaving : Bangladesh
- Dyeing : Bangladesh
- Assembly : Bangladesh

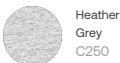
Whites



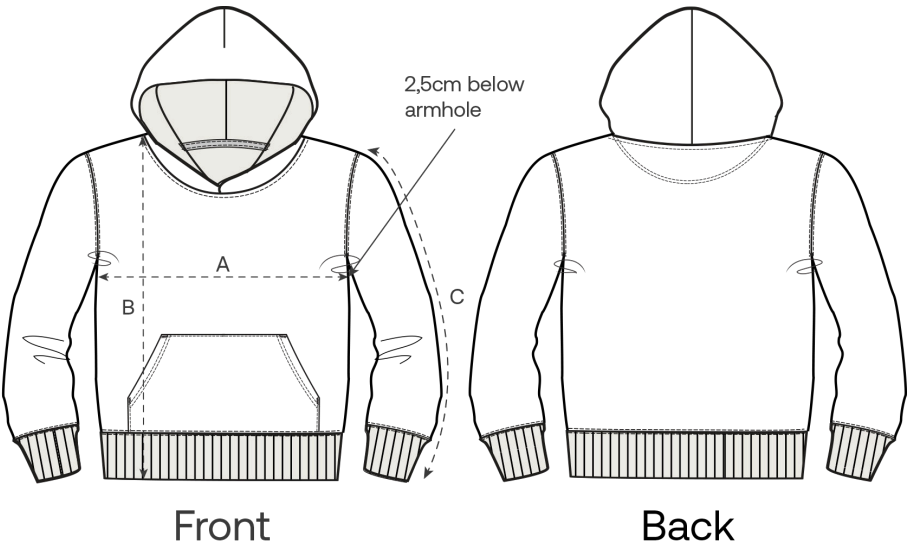
Colors



Essential Heathers



Size Guide



Measurement in cm	6-12 m/68-80cm	12-18 m/80-86cm	18-24 m/86-92cm	24-36 m/92-98cm
A - Half Chest	29.5	31	32.5	33.5
B - Body Length	30.5	32	34	36.5
C - Sleeve Length	22	22.5	24.5	27

Packing

Sizes	6-12 m/68-80cm	12-18 m/80-86cm	18-24 m/86-92cm	24-36 m/92-98cm
Pieces / bag	5	5	5	5
Pieces / box	30	30	30	30

Environmental impact

Please note that the table below shows data for size 6–12 months for babies.

Carbon emission in Kg CO2eq	Natural Raw	Eco-heather	Whites & Colours	Heathers*
From cradle to gate <sup>1</sup>	1.74	-	2.19	2.09
From cradle to grave <sup>2</sup>	2.32	-	2.78	2.67

Water usage in m³	Natural Raw	Eco-heather	Whites & Colours	Heathers*
From cradle to gate <sup>1</sup>	0.55	-	1.18	0.93
From cradle to grave <sup>2</sup>	0.97	-	1.6	1.35

1 - From the extraction of raw materials to the point it leaves the manufacturer.    2 - From the extraction of raw materials to the product end-of-life.    \* Except Heather Haze