



The babies' Iconic crewneck sweatshirt

Medium Fit	6-12 m/68-80cm → 24-36 m/92-98cm	280 GSM
------------	----------------------------------	---------

Description

- 1x1 rib at neckline, sleeve cuffs and hem
- Single-jersey back neck tape
- Self-fabric half-moon at back neck
- Shoulder placket with one snap in matching colour and one hidden snap for easy dressing
- Set-in sleeves
- Single-needle topstitching at neckline
- Twin-needle topstitching at sleeve cuffs and hem

Composition

- Shell - French Terry
- 85% Cotton - Organic Ring Spun Combed, 15% Polyester - Recycled - 280.0 GSM
- Fabric washed, Light sueded

Care instruction

Wash similar colours together, no ironing on print, wash and iron inside out.



Country of origin

- Weaving : Bangladesh
- Dyeing : Bangladesh
- Assembly : Bangladesh



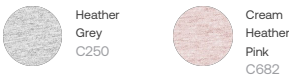
Whites



Colors



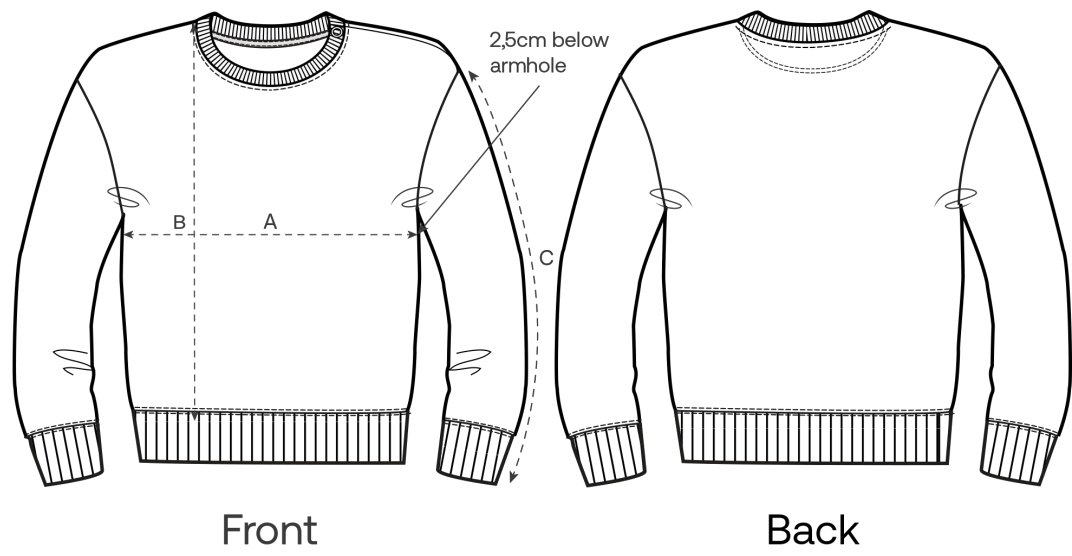
Essential Heathers



Special Heathers



Size Guide



Measurement in cm	6-12 m/68-80cm	12-18 m/80-86cm	18-24 m/86-92cm	24-36 m/92-98cm
A - Half Chest	29.5	31	32.5	33.5
B - Body Length	32	33.5	35.5	38
C - Sleeve Length	22	22.5	24.5	27

Packing

Sizes	6-12 m/68-80cm	12-18 m/80-86cm	18-24 m/86-92cm	24-36 m/92-98cm
Pieces / bag	5	5	5	5
Pieces / box	30	30	30	30

Environmental impact

Please note that the table below shows data for size 6–12 months for babies.

Carbon emission in Kg CO2eq	Natural Raw	Eco-heather	Whites & Colours	Heathers*
From cradle to gate ¹	1.5	1.52	1.83	1.75
From cradle to grave ²	1.98	2.0	2.31	2.23

Water usage in m³	Natural Raw	Eco-heather	Whites & Colours	Heathers*
From cradle to gate ¹	0.46	0.56	0.95	0.75
From cradle to grave ²	0.8	0.9	1.29	1.09

1 - From the extraction of raw materials to the point it leaves the manufacturer. 2 - From the extraction of raw materials to the product end-of-life. * Except Heather Haze