



The kids' Iconic hoodie

Medium Fit	3-4/98-104cm → 12-13/152-158cm	300 GSM
------------	--------------------------------	---------

Description

- Double-layered hood in self-fabric
- Single-jersey back neck tape
- Self-fabric half-moon at back neck with 3mm twin-needle topstitching
- Set-in sleeves
- Single-needle topstitching at neckline
- 1x1 rib at sleeve cuffs and hem
- Kangaroo pocket with 3mm single-needle topstitching
- Twin-needle topstitching at armholes, sleeve cuffs and hem

Composition

- Shell - Brushed
- 100% Cotton - Organic Ring Spun Combed - 300.0 GSM
- Panel washed

Care instruction

Wash similar colours together, no ironing on print, wash and iron inside out.



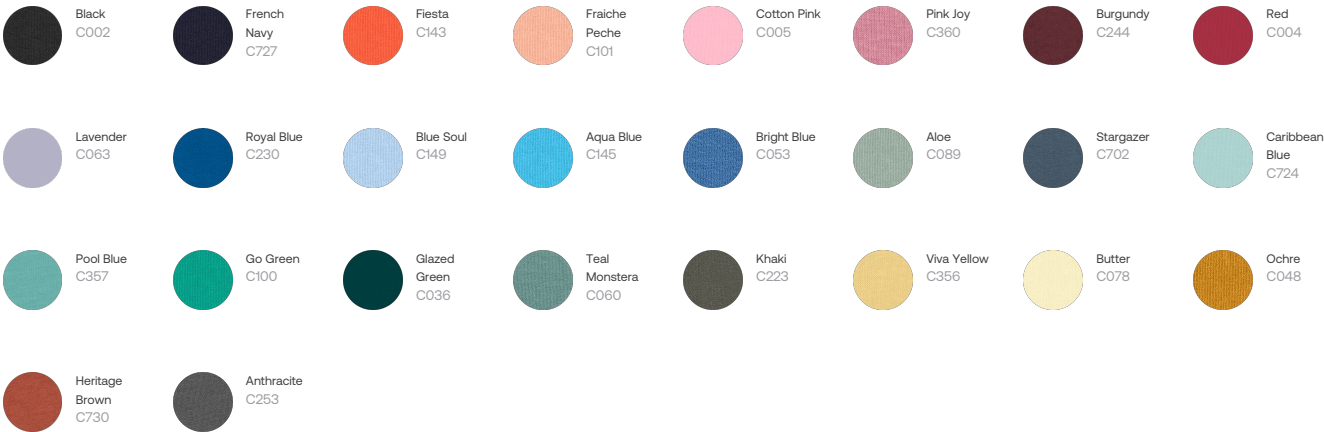
Country of origin

- Weaving : Bangladesh
- Dyeing : Bangladesh
- Assembly : Bangladesh

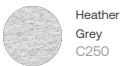
Whites



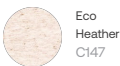
Colors



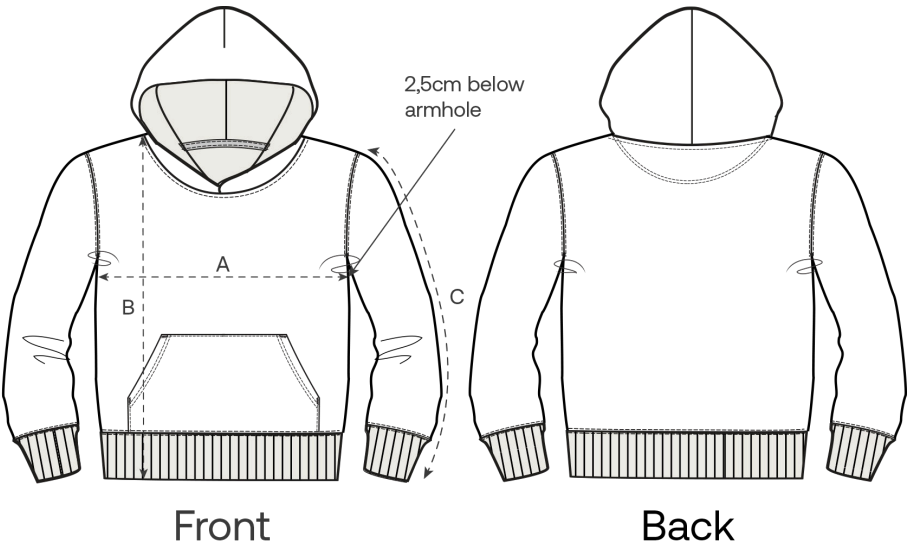
Essential Heathers



Special Heathers



Size Guide



Measurement in cm	3-4/98-104cm	5-6/110-116cm	7-8/122-128cm	9-11/134-146cm	12-13/152-158cm
A - Half Chest	38	40	42	46	50
B - Body Length	43	46	52	59	66
C - Sleeve Length	32	37.5	43.5	50.5	57.5

Packing

Sizes	3-4/98-104cm	5-6/110-116cm	7-8/122-128cm	9-11/134-146cm	12-13/152-158cm
Pieces / bag	5	5	5	5	5
Pieces / box	20	20	20	20	20

Environmental impact for sizes 3-4 years

Please note that the table below shows data for a child aged 3 to 4 years.

Carbon emission in Kg CO2eq	Natural Raw	Eco-heather	Whites & Colours	Heathers*
From cradle to gate ¹	2.43	2.52	3.02	3.06
From cradle to grave ²	3.44	3.54	4.03	4.08

Water usage in m³	Natural Raw	Eco-heather	Whites & Colours	Heathers*
From cradle to gate ¹	0.95	1.15	1.53	1.64
From cradle to grave ²	1.65	1.84	2.23	2.33

Environmental impact for sizes 9-11 years

Please note that the table below shows data for a child aged 9 to 11 years.

Carbon emission in Kg CO2eq	Natural Raw	Eco-heather	Whites & Colours	Heathers*
From cradle to gate ¹	3.45	3.59	4.31	4.38
From cradle to grave ²	4.9	5.04	5.76	5.83

Water usage in m³	Natural Raw	Eco-heather	Whites & Colours	Heathers*
From cradle to gate ¹	1.39	1.67	2.23	2.39
From cradle to grave ²	2.38	2.67	3.23	3.38

1 - From the extraction of raw materials to the point it leaves the manufacturer. 2 - From the extraction of raw materials to the product end-of-life. * Except Heather Haze