



The kids' Iconic sweatshirt

Medium Fit	3-4/98-104cm → 12-13/152-158cm	300 GSM
------------	--------------------------------	---------

Description

- 1x1 rib at neckline, sleeve cuffs and hem
- Single-jersey back neck tape
- Self-fabric half-moon at back neck with 3mm twin-needle topstitching
- Set-in sleeves
- Single-needle topstitching at neckline
- Twin-needle topstitching at armholes, sleeve cuffs and hem

Composition

- Shell - Brushed
- 100% Cotton - Organic Ring Spun Combed - 300.0 GSM
- Panel washed

Care instruction

Wash similar colours together, no ironing on print, wash and iron inside out.



Country of origin

- Weaving : Bangladesh
- Dyeing : Bangladesh
- Assembly : Bangladesh



Whites



Colors



Black
C002



French
Navy
C727



Fraiche
Peche
C101



Cotton Pink
C005



Pink Joy
C360



Red Brown
C116



Lavender
C063



Royal Blue
C230



Blue Soul
C149



Bright Blue
C053



Stargazer
C702



Pool Blue
C357



Glazed
Green
C036



Teal
Monstera
C060



Khaki
C223



Viva Yellow
C356



Heritage
Brown
C730

Essential Heathers



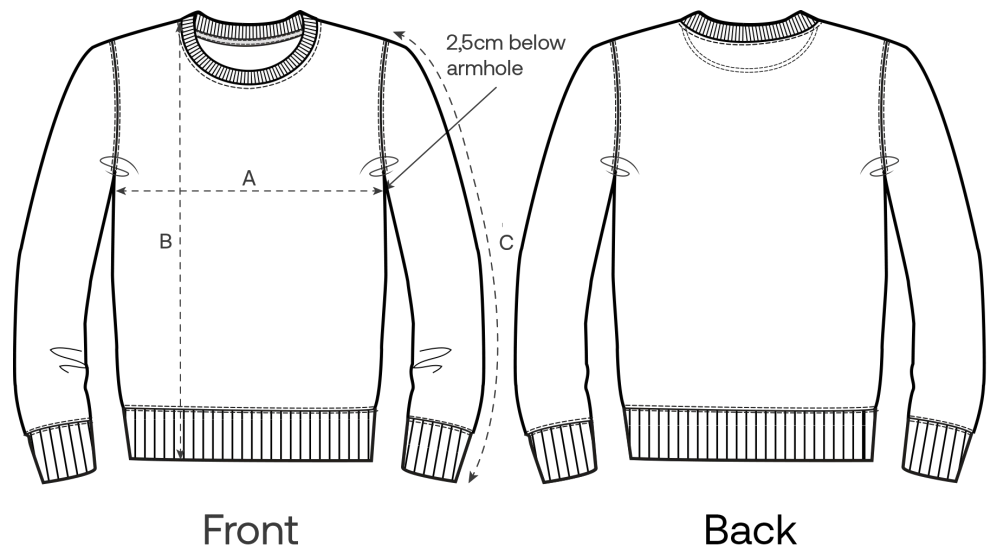
Heather
Grey
C250

Special Heathers



Eco
Heather
C147

Size Guide



Measurement in cm	3-4/98-104cm	5-6/110-116cm	7-8/122-128cm	9-11/134-146cm	12-13/152-158cm
A - Half Chest	38	40	42	46	50
B - Body Length	43	46	52	59	66
C - Sleeve Length	32	37.5	43.5	50.5	57.5

Packing

Sizes	3-4/98-104cm	5-6/110-116cm	7-8/122-128cm	9-11/134-146cm	12-13/152-158cm
Pieces / bag	5	5	5	5	5
Pieces / box	20	20	20	20	20

Environmental impact for sizes 3-4 years

Please note that the table below shows data for a child aged 3 to 4 years.

Carbon emission in Kg CO2eq	Natural Raw	Eco-heather	Whites & Colours	Heathers*
From cradle to gate ¹	1.57	1.64	1.96	2.0
From cradle to grave ²	2.28	2.35	2.67	2.71

Water usage in m³	Natural Raw	Eco-heather	Whites & Colours	Heathers*
From cradle to gate ¹	0.64	0.77	1.03	1.1
From cradle to grave ²	1.12	1.25	1.51	1.58

Environmental impact for sizes 9-11 years

Please note that the table below shows data for a child aged 9 to 11 years.

Carbon emission in Kg CO2eq	Natural Raw	Eco-heather	Whites & Colours	Heathers*
From cradle to gate ¹	2.31	2.41	2.9	2.95
From cradle to grave ²	3.32	3.43	3.91	3.97

Water usage in m³	Natural Raw	Eco-heather	Whites & Colours	Heathers*
From cradle to gate ¹	0.96	1.15	1.54	1.64
From cradle to grave ²	1.65	1.85	2.23	2.34

1 - From the extraction of raw materials to the point it leaves the manufacturer. 2 - From the extraction of raw materials to the product end-of-life. * Except Heather Haze