



The kids' Iconic zip-through hoodie

Medium Fit	3-4/98-104cm → 12-13/152-158cm	300 GSM
------------	--------------------------------	---------

Description

- Double-layered hood in self-fabric
- Exposed metal zip at centre front
- Single-jersey back neck tape
- Self-fabric half-moon at back neck with 3mm twin-needle topstitching
- Set-in sleeves
- Single-needle topstitching at neckline
- 1x1 rib at sleeve cuffs and hem
- Kangaroo pocket with 3mm single-needle topstitching
- Twin-needle topstitching at armholes, sleeve cuffs and hem

Composition

- Shell - Brushed
- 100% Cotton - Organic Ring Spun Combed - 300.0 GSM
- Panel washed

Care instruction

Wash similar colours together, no ironing on print, wash and iron inside out.



Country of origin

- Weaving : Bangladesh
- Dyeing : Bangladesh
- Assembly : Bangladesh

Whites



Colors



Black  
C002



French  
Navy  
C727



Fraiche  
Peche  
C101



Red  
C004



Blue Soul  
C149



Glazed  
Green  
C036



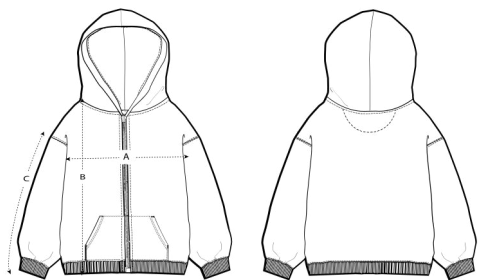
Teal  
Monstera  
C060

Essential Heathers



Heather  
Grey  
C250

Size Guide



Measurement in cm	3-4/98-104cm	5-6/110-116cm	7-8/122-128cm	9-11/134-146cm	12-13/152-158cm
A - Half Chest	38	40	42	46	50
B - Body Length	43	46	52	59	66
C - Sleeve Length	35	37.5	43.5	50.5	57.5

Packing

Sizes	3-4/98-104cm	5-6/110-116cm	7-8/122-128cm	9-11/134-146cm	12-13/152-158cm
Pieces / bag	5	5	5	5	5
Pieces / box	20	20	20	20	20

Environmental impact for sizes 3-4 years

Please note that the table below shows data for a child aged 3 to 4 years.

Carbon emission in Kg CO2eq	Natural Raw	Eco-heather	Whites & Colours	Heathers*
From cradle to gate <sup>1</sup>	2.44	-	3.78	3.83
From cradle to grave <sup>2</sup>	3.41	-	5.03	5.08

Water usage in m³	Natural Raw	Eco-heather	Whites & Colours	Heathers*
From cradle to gate <sup>1</sup>	0.88	-	1.92	2.05
From cradle to grave <sup>2</sup>	1.56	-	2.77	2.9

Environmental impact for sizes 9-11 years

Please note that the table below shows data for a child aged 9 to 11 years.

Carbon emission in Kg CO2eq	Natural Raw	Eco-heather	Whites & Colours	Heathers*
From cradle to gate <sup>1</sup>	3.18	-	5.66	5.74
From cradle to grave <sup>2</sup>	4.46	-	7.56	7.64

Water usage in m³	Natural Raw	Eco-heather	Whites & Colours	Heathers*
From cradle to gate <sup>1</sup>	1.18	-	2.94	3.14
From cradle to grave <sup>2</sup>	2.07	-	4.23	4.43

1 - From the extraction of raw materials to the point it leaves the manufacturer.    2 - From the extraction of raw materials to the product end-of-life.    \* Except Heather Haze