



### 300 GSM

Weaving : Bangladesh  
Dyeing : Bangladesh  
Assembly : Bangladesh

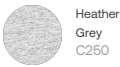
Whites



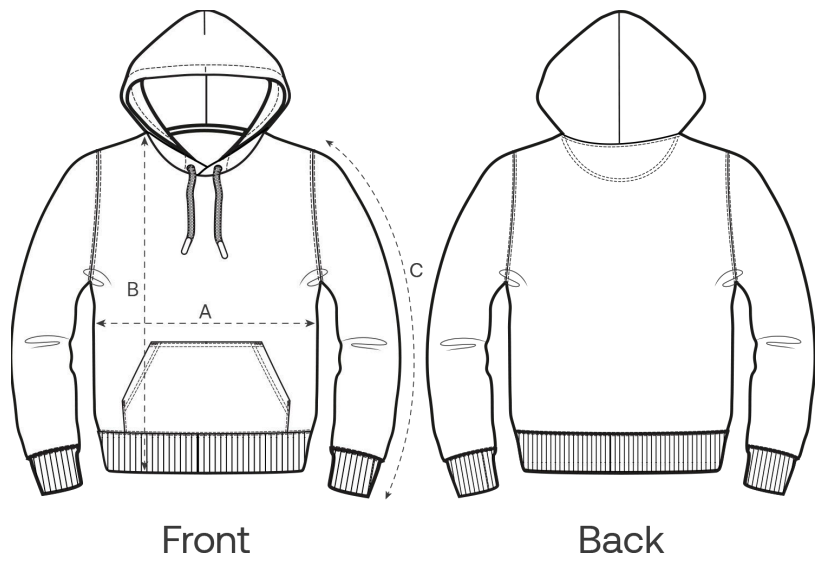
Colors



Essential Heathers



Size Guide



| Measurement in cm | XXS  | XS   | S    | M  | L    | XL | XXL  | 3XL |
|-------------------|------|------|------|----|------|----|------|-----|
| A - Half Chest    | 46   | 49   | 52   | 55 | 58   | 61 | 64   | 67  |
| B - Body Length   | 60.5 | 62.5 | 68   | 72 | 74   | 76 | 78   | 80  |
| C - Sleeve Length | 57   | 59   | 62.5 | 65 | 68.5 | 69 | 69.5 | 70  |

Packing

| Sizes        | XXS | XS | S  | M  | L  | XL | XXL | 3XL |
|--------------|-----|----|----|----|----|----|-----|-----|
| Pieces / bag | 5   | 5  | 5  | 5  | 5  | 5  | 5   | 5   |
| Pieces / box | 10  | 20 | 20 | 20 | 20 | 20 | 20  | 10  |

Environmental impact

Please note that the table below shows data for an adult in size M.

| Carbon emission in Kg CO2eq       | Natural Raw | Eco-heather | Whites & Colours | Heathers* |
|-----------------------------------|-------------|-------------|------------------|-----------|
| From cradle to gate <sup>1</sup>  | 5.24        | -           | 6.79             | 6.36      |
| From cradle to grave <sup>2</sup> | 7.84        | -           | 9.39             | 8.96      |

| Water usage in m³                 | Natural Raw | Eco-heather | Whites & Colours | Heathers* |
|-----------------------------------|-------------|-------------|------------------|-----------|
| From cradle to gate <sup>1</sup>  | 2.1         | -           | 4.37             | 3.41      |
| From cradle to grave <sup>2</sup> | 3.7         | -           | 5.97             | 5.01      |

1 - From the extraction of raw materials to the point it leaves the manufacturer. 2 - From the extraction of raw materials to the product end-of-life. \* Except Heather Haze