



The unisex relaxed hoodie

Relaxed Fit

XXS → 3XL

280 GSM

Description

Double-layered hood in self-fabric

No drawcord

Herringbone back neck tape

Self-fabric half-moon at back neck

Set-in sleeves

1x1 rib at sleeve cuffs and hem

Twin-needle topstitching at shoulders, armholes, sleeve cuffs and hem

Composition

Shell - Brushed

85% Cotton - Organic Ring Spun Combed, 15% Polyester - Recycled - 280.0 GSM

Fabric washed

Care instruction

Wash similar colours together, no ironing on print, wash and iron inside out.



Country of origin

Weaving : Bangladesh

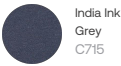
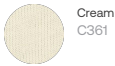
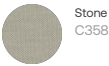
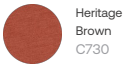
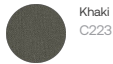
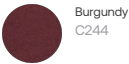
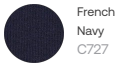
Dyeing : Bangladesh

Assembly : Bangladesh

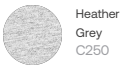
Whites



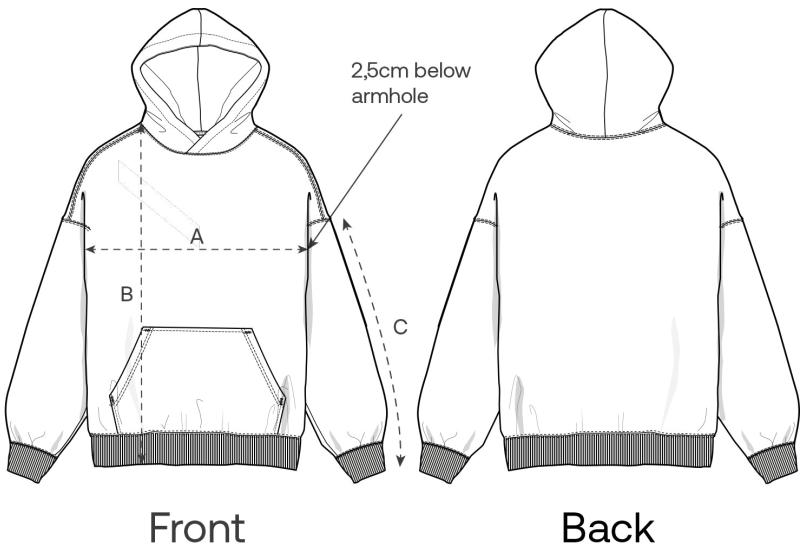
Colors



Essential Heathers



Size Guide



Measurement in cm	XXS	XS	S	M	L	XL	XXL	3XL
A - Half Chest	53	55	57	61	64	67	71	75
B - Body Length	58	61	65	69	71	73	73	75
C - Sleeve Length	50.5	52.5	56.5	58.5	60.5	61	61.5	61.5

Packing

Sizes	XXS	XS	S	M	L	XL	XXL	3XL
Pieces / bag	5	5	5	5	5	5	5	5
Pieces / box	10	20	20	20	20	20	20	10

Environmental impact

Please note that the table below shows data for an adult in size M.

Carbon emission in Kg CO2eq	Natural Raw	Eco-heather	Whites & Colours	Heathers*
From cradle to gate ¹	5.08	-	6.57	6.21
From cradle to grave ²	7.59	-	9.09	8.72

Water usage in m³	Natural Raw	Eco-heather	Whites & Colours	Heathers*
From cradle to gate ¹	2.02	-	4.23	3.18
From cradle to grave ²	3.5	-	5.71	4.66

1 - From the extraction of raw materials to the point it leaves the manufacturer. 2 - From the extraction of raw materials to the product end-of-life. * Except Heather Haze