



The unisex hoodie

Medium Fit

XXS → 5XL\*

280 GSM

Description

- Double-layered hood in self-fabric
- Flat drawcord in matching colour
- Embroidered eyelets
- Herringbone back neck tape
- Self-fabric half-moon at back neck
- Set-in sleeves
- Kangaroo pocket with twin-needle topstitching
- 1x1 rib at sleeve cuffs and hem
- Flatlock stitching throughout

Composition

- Shell - Brushed
- 85% Cotton - Organic Ring Spun Combed, 15% Polyester - Recycled - 280.0 GSM
- Fabric washed

Care instruction

Wash similar colours together, no ironing on print, wash and iron inside out.



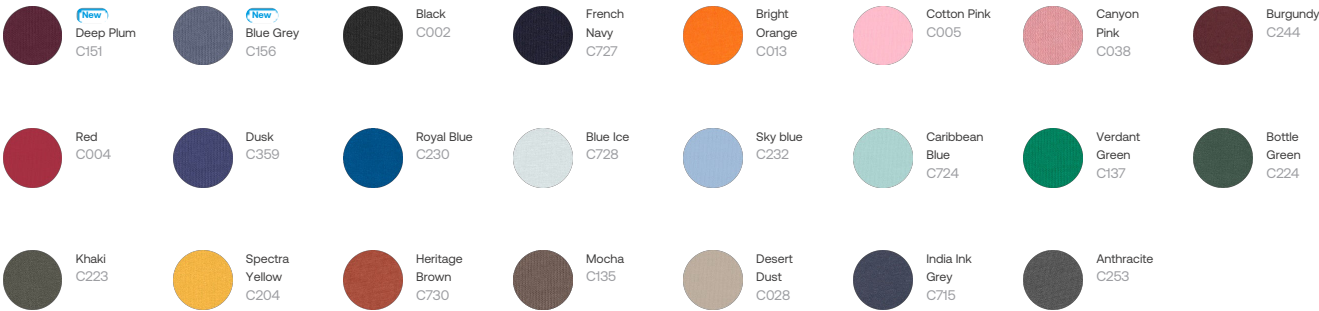
Country of origin

- Weaving : Bangladesh
- Dyeing : Bangladesh
- Assembly : Bangladesh

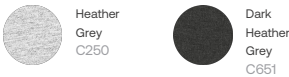
Whites



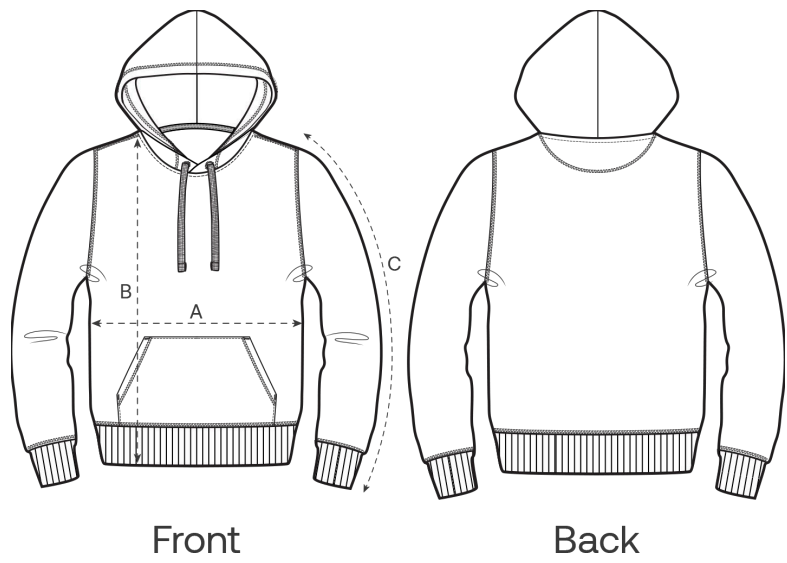
Colors



Essential Heathers



Size Guide



Measurement in cm	XXS	XS	S	M	L	XL	XXL	3XL	4XL	5XL
A - Half Chest	46	48	50	54	57	60	64	68	73	78
B - Body Length	59	62	66	70	72	74	76	78	80	81
C - Sleeve Length	56.5	58.5	63	65.5	67.5	68	68.5	68.5	68.5	68.5

Packing

Sizes	XXS	XS	S	M	L	XL	XXL	3XL	4XL	5XL
Pieces / bag	5	5	5	5	5	5	5	5	5	5
Pieces / box	10	20	20	20	20	20	20	10	10	10

Environmental impact

Please note that the table below shows data for an adult in size M.

Carbon emission in Kg CO2eq	Natural Raw	Eco-heather	Whites & Colours	Heathers*
From cradle to gate <sup>1</sup>	5.1	-	6.6	6.16
From cradle to grave <sup>2</sup>	7.45	-	8.9	8.51

Water usage in m³	Natural Raw	Eco-heather	Whites & Colours	Heathers*
From cradle to gate <sup>1</sup>	1.97	-	4.1	3.2
From cradle to grave <sup>2</sup>	3.43	-	5.6	4.67

1 - From the extraction of raw materials to the point it leaves the manufacturer.    2 - From the extraction of raw materials to the product end-of-life.    \* Except Heather Haze