



**Medium Fit**

### 350 GSM

- Double-layered hood in self-fabric
- Round drawcord in matching colour with closed-end metal tipping
- Metal eyelets
- Herringbone back neck tape
- Self-fabric half-moon at back neck
- Exposed metal zip at centre front
- Set-in sleeves
- Kangaroo pocket
- 1x1 rib at sleeve cuffs and hem
- Twin-needle topstitching at armholes, sleeve cuffs and hem

Shell - Brushed  
100% Cotton - Organic Ring Spun Combed - 350.0 GSM  
Fabric washed

Wash similar colours together, no ironing on print, wash and iron inside out.



Weaving : Bangladesh  
Dyeing : Bangladesh  
Assembly : Bangladesh

Whites



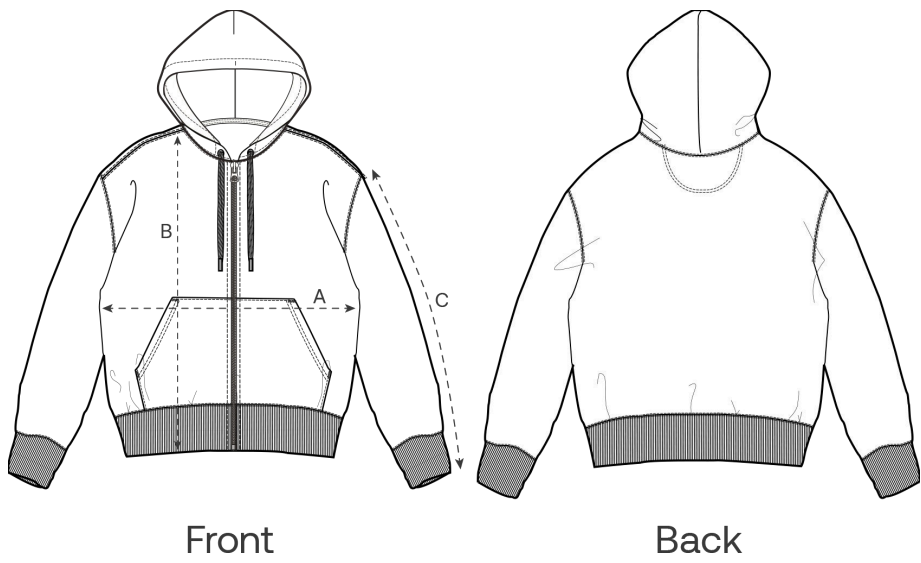
Colors



Essential Heathers



Size Guide



Measurement in cm	XXS	XS	S	M	L	XL	XXL	3XL	4XL	5XL
A - Half Chest	51	53	55	59	62	65	69	73	78	81
B - Body Length	64	67	71	74	76	78	80	82	84	85
C - Sleeve Length	58.5	60.5	64.5	66.5	68.5	69	69.5	69.5	69.5	69.5

Packing

Sizes	XXS	XS	S	M	L	XL	XXL	3XL	4XL	5XL
Pieces / bag	5	5	5	5	5	5	5	5	5	5
Pieces / box	10	20	20	20	20	20	20	10	10	10

Environmental impact

Please note that the table below shows data for an adult in size M.

Carbon emission in Kg CO2eq	Natural Raw	Eco-heather	Whites & Colours	Heathers*
From cradle to gate <sup>1</sup>	6.98	-	8.79	9.0
From cradle to grave <sup>2</sup>	11.1	-	12.9	13.1

Water usage in m³	Natural Raw	Eco-heather	Whites & Colours	Heathers*
From cradle to gate <sup>1</sup>	2.73	-	4.56	4.86
From cradle to grave <sup>2</sup>	4.93	-	6.76	7.06

1 - From the extraction of raw materials to the point it leaves the manufacturer.    2 - From the extraction of raw materials to the product end-of-life.    \* Except Heather Haze