



**Medium Fit**

## 280 GSM

- Self-fabric mock-neck collar
- Herringbone tape at back neck and along zip
- Self-fabric half-moon at back neck
- Quarter zip at centre front
- Set-in sleeves
- 1x1 rib at sleeve cuffs and hem
- Twin-needle topstitching at armholes, sleeve cuffs and hem

Shell - Brushed  
85% Cotton - Organic Ring Spun Combed, 15% Polyester - Recycled - 280.0 GSM  
Fabric washed

Wash similar colours together, no ironing on print, wash and iron inside out.

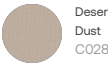
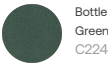
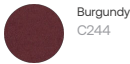
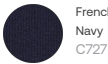
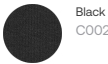


Weaving : Bangladesh  
Dyeing : Bangladesh  
Assembly : Bangladesh

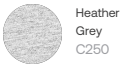
Whites



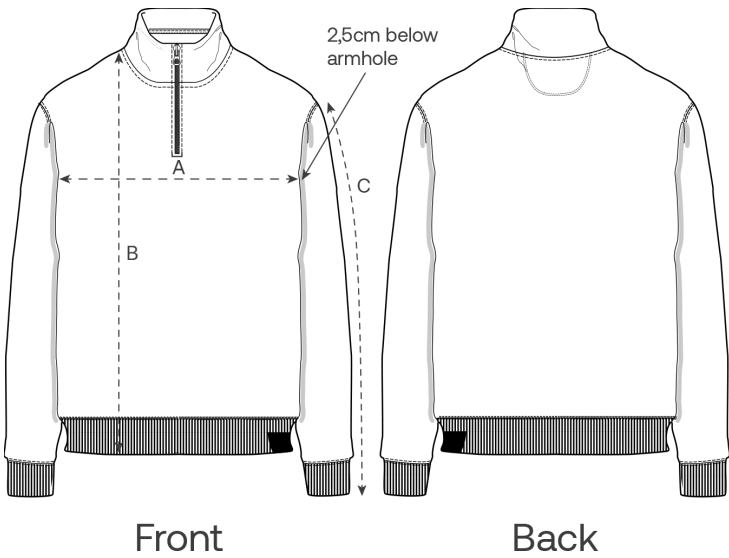
Colors



Essential Heathers



Size Guide



| Measurement in cm | XXS  | XS   | S  | M    | L    | XL | XXL  | 3XL  | 4XL  | 5XL  |
|-------------------|------|------|----|------|------|----|------|------|------|------|
| A - Half Chest    | 46   | 48   | 50 | 54   | 57   | 60 | 64   | 68   | 73   | 78   |
| B - Body Length   | 59   | 62   | 66 | 70   | 72   | 74 | 76   | 78   | 80   | 81   |
| C - Sleeve Length | 56.5 | 58.5 | 63 | 65.5 | 67.5 | 68 | 68.5 | 68.5 | 68.5 | 68.5 |

Packing

| Sizes        | XXS | XS | S  | M  | L  | XL | XXL | 3XL | 4XL | 5XL |
|--------------|-----|----|----|----|----|----|-----|-----|-----|-----|
| Pieces / bag | 5   | 5  | 5  | 5  | 5  | 5  | 5   | 5   | 5   | 5   |
| Pieces / box | 10  | 20 | 20 | 20 | 20 | 20 | 20  | 10  | 10  | 10  |

Environmental impact

Please note that the table below shows data for an adult in size M.

| Carbon emission in Kg CO2eq       | Natural Raw | Eco-heather | Whites & Colours | Heathers* |
|-----------------------------------|-------------|-------------|------------------|-----------|
| From cradle to gate <sup>1</sup>  | -           | -           | 5.46             | 5.13      |
| From cradle to grave <sup>2</sup> | -           | -           | 7.37             | 7.04      |

| Water usage in m³                 | Natural Raw | Eco-heather | Whites & Colours | Heathers* |
|-----------------------------------|-------------|-------------|------------------|-----------|
| From cradle to gate <sup>1</sup>  | -           | -           | 3.38             | 2.64      |
| From cradle to grave <sup>2</sup> | -           | -           | 4.6              | 3.86      |

1 - From the extraction of raw materials to the point it leaves the manufacturer. 2 - From the extraction of raw materials to the product end-of-life. \* Except Heather Haze