



### Medium Fit

### 300 GSM

- Double-layered hood in self-fabric
- Round drawcord in matching colour with closed-end metal tipping
- Metal eyelets
- Herringbone tape at back neck and along zip
- Self-fabric half-moon at back neck
- Covered metal zip at centre front
- Set-in sleeves
- Kangaroo pocket
- 1x1 rib at sleeve cuffs and hem
- Twin-needle topstitching at armholes, sleeve cuffs and hem

Shell - French Terry  
85% Cotton - Organic Ring Spun Combed, 15% Polyester - Recycled - 300.0 GSM  
Fabric washed

Wash similar colours together, no ironing on print, wash and iron inside out.



Weaving : Bangladesh  
Dyeing : Bangladesh  
Assembly : Bangladesh

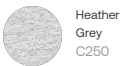
Whites



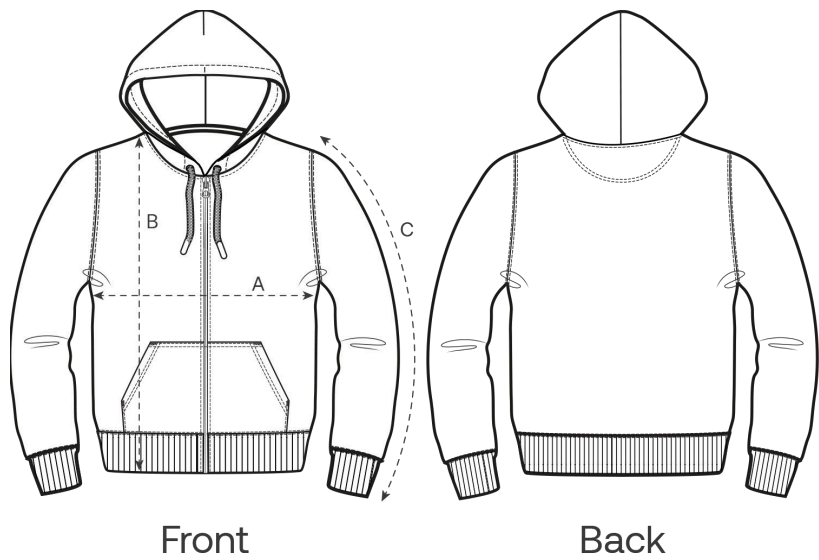
Colors



Essential Heathers



Size Guide



Measurement in cm	XXS	XS	S	M	L	XL	XXL	3XL
A - Half Chest	47	49	51	55	58	61	65	69
B - Body Length	61	64	68	72	74	76	78	80
C - Sleeve Length	56	58	62.5	65	67	67.5	68	68

Packing

Sizes	XXS	XS	S	M	L	XL	XXL	3XL
Pieces / bag	5	5	5	5	5	5	5	5
Pieces / box	10	20	20	20	20	20	20	10

Environmental impact

Please note that the table below shows data for an adult in size M.

Carbon emission in Kg CO2eq	Natural Raw	Eco-heather	Whites & Colours	Heathers*
From cradle to gate <sup>1</sup>	5.57	-	7.25	6.8
From cradle to grave <sup>2</sup>	8.7	-	10.3	9.93

Water usage in m³	Natural Raw	Eco-heather	Whites & Colours	Heathers*
From cradle to gate <sup>1</sup>	2.26	-	4.72	3.68
From cradle to grave <sup>2</sup>	4.01	-	6.48	5.43

1 - From the extraction of raw materials to the point it leaves the manufacturer. 2 - From the extraction of raw materials to the product end-of-life. \* Except Heather Haze