



## Oversized

## 350 GSM

- Double-layered hood in self-fabric
- Flat drawcord in matching colour
- Embroidered eyelets
- Herringbone back neck tape
- Self-fabric half-moon at back neck
- Set-in sleeves
- 2x1 rib at sleeve cuffs and hem
- Kangaroo pocket
- Twin-needle topstitching throughout

Shell - Brushed  
100% Cotton - Organic Ring Spun Combed - 350.0 GSM  
Fabric washed

Wash similar colours together, no ironing on print, wash and iron inside out.

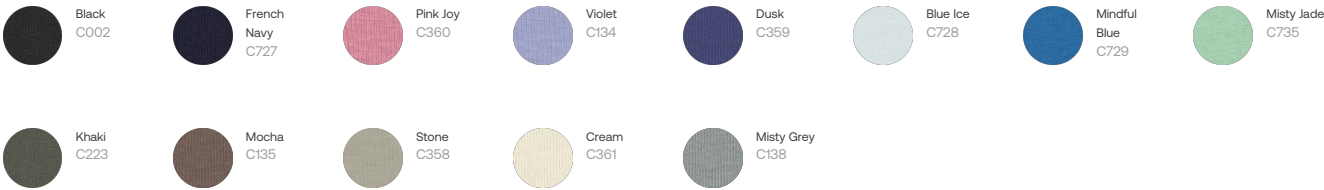


Weaving : Bangladesh  
Dyeing : Bangladesh  
Assembly : Bangladesh

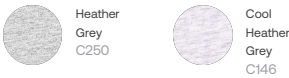
Whites



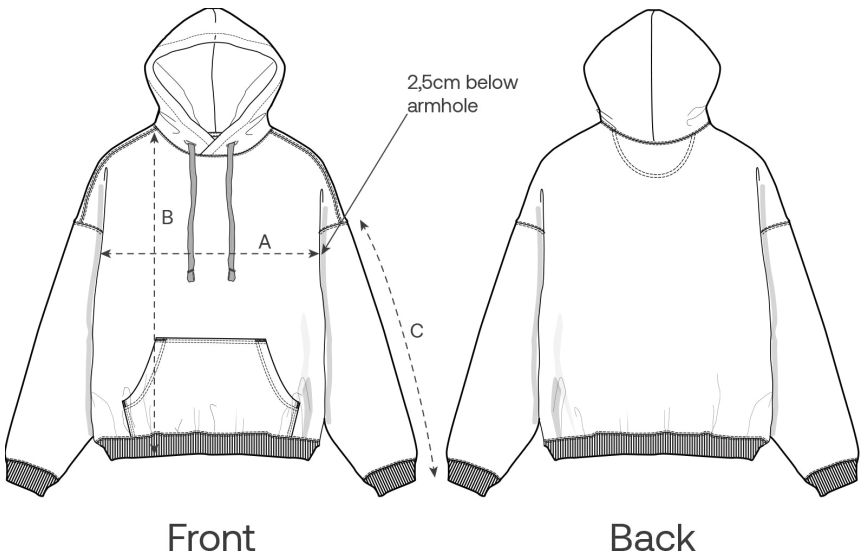
Colors



Essential Heathers



Size Guide



Measurement in cm	XXS	XS	S	M	L	XL	XXL	3XL
A - Half Chest	59.5	61.5	63.5	67.5	70.5	73.5	77.5	81.5
B - Body Length	62	65	69	73	75	77	79	81
C - Sleeve Length	51	53	57	59	61	61.5	62	62

Packing

Sizes	XXS	XS	S	M	L	XL	XXL	3XL
Pieces / bag	5	5	5	5	5	5	5	5
Pieces / box	10	20	20	20	20	20	20	10

Environmental impact

Please note that the table below shows data for an adult in size M.

Carbon emission in Kg CO2eq	Natural Raw	Eco-heather	Whites & Colours	Heathers*
From cradle to gate <sup>1</sup>	7.37	-	9.34	9.48
From cradle to grave <sup>2</sup>	11.5	-	13.5	13.6

Water usage in m³	Natural Raw	Eco-heather	Whites & Colours	Heathers*
From cradle to gate <sup>1</sup>	2.9	-	4.84	5.17
From cradle to grave <sup>2</sup>	5.1	-	7.04	7.37

1 - From the extraction of raw materials to the point it leaves the manufacturer.    2 - From the extraction of raw materials to the product end-of-life.    \* Except Heather Haze