



The unisex dry-handfeel hoodie in recycled cotton

Medium Fit

XXS → 3XL

350 GSM

Description

- Double-layered hood in self-fabric
- Round drawcord in matching colour with closed-end metal tipping
- Metal eyelets
- Herringbone back neck tape
- Self-fabric half-moon at back neck
- Set-in sleeves
- Kangaroo pocket
- 1x1 rib at sleeve cuffs and hem
- Single-needle topstitching at neckline and along hood opening
- Twin-needle topstitching at armholes, sleeve cuffs and hem
- Fabric surface has a unique dry handfeel created by the recycled fibres
- Made from in-house organic cutting waste

Composition

- Shell - French Terry
- 43% Cotton - Organic open end, 42% Cotton - Recycled Open End, 15% Polyester - Recycled - 350.0 GSM
- Fabric washed, Light sueded

Care instruction

Wash similar colours together, no ironing on print, wash and iron inside out.



Country of origin

- Weaving : Bangladesh
- Dyeing : Bangladesh
- Assembly : Bangladesh



Colors



RE-Navy
C601

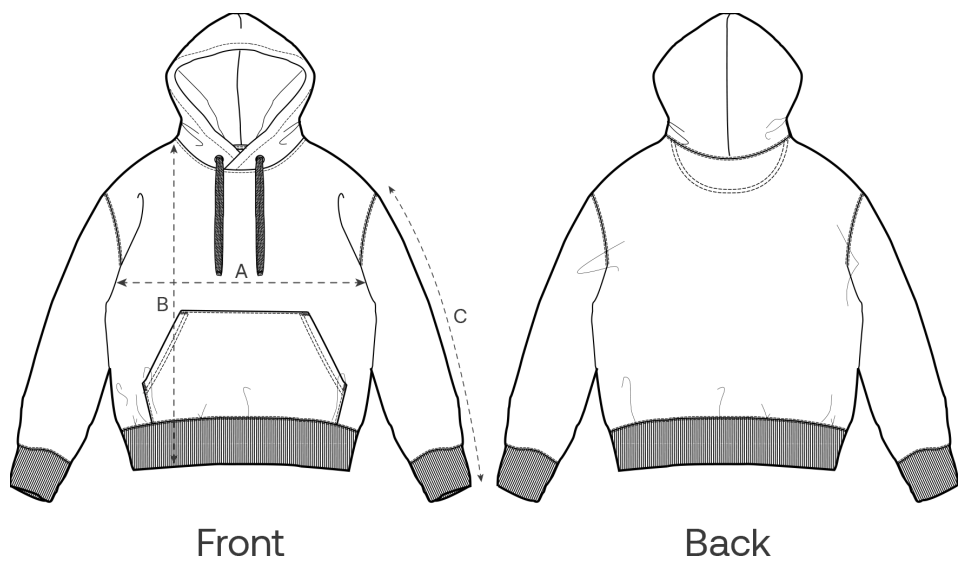


RE-White
C602



RE-Black
C600

Size Guide



Measurement in cm	XXS	XS	S	M	L	XL	XXL	3XL
A - Half Chest	47	49.5	52	54.5	57.5	60.5	63.5	66.5
B - Body Length	61	63	68	72	74	76	78	80
C - Sleeve Length	59	60	64	65.5	67	68.5	70	70

Packing

Sizes	XXS	XS	S	M	L	XL	XXL	3XL
Pieces / bag	5	5	5	5	5	5	5	5
Pieces / box	10	20	20	20	20	20	20	10

Environmental impact

Please note that the table below shows data for an adult in size M.

Carbon emission in Kg CO2eq	Natural Raw	Eco-heather	Whites & Colours	Heathers*
From cradle to gate ¹	-	-	5.04	-
From cradle to grave ²	-	-	7.62	-

Water usage in m³	Natural Raw	Eco-heather	Whites & Colours	Heathers*
From cradle to gate ¹	-	-	2.23	-
From cradle to grave ²	-	-	3.98	-

1 - From the extraction of raw materials to the point it leaves the manufacturer. 2 - From the extraction of raw materials to the product end-of-life. * Except Heather Haze