



The women's Iconic zip-through hoodie

Medium Fit

XS → XXL

300 GSM

Description

- Set-in sleeves
- Dropped shoulders
- Double layered hood in self fabric
- Flat drawcord in matching body colour
- Embroidered eyelet
- Covered metal zipper at center front
- 1X1 ribs at sleeves cuffs and bottom hem
- 2 needles topstitches on all seams
- Inside gros grain back neck tape
- Self fabric halfmoon at back neck

Composition

- Shell - Brushed
- 100% Cotton - Organic Ring Spun Combed - 300.0 GSM
- Fabric washed

Care instruction

Wash similar colours together, no ironing on print, wash and iron inside out.



Country of origin

- Weaving : Bangladesh
- Dyeing : Bangladesh
- Assembly : Bangladesh

Whites



White  
C001



Natural  
Raw  
C054

Colors



Black  
C002



French  
Navy  
C727



Bubble Pink  
C129



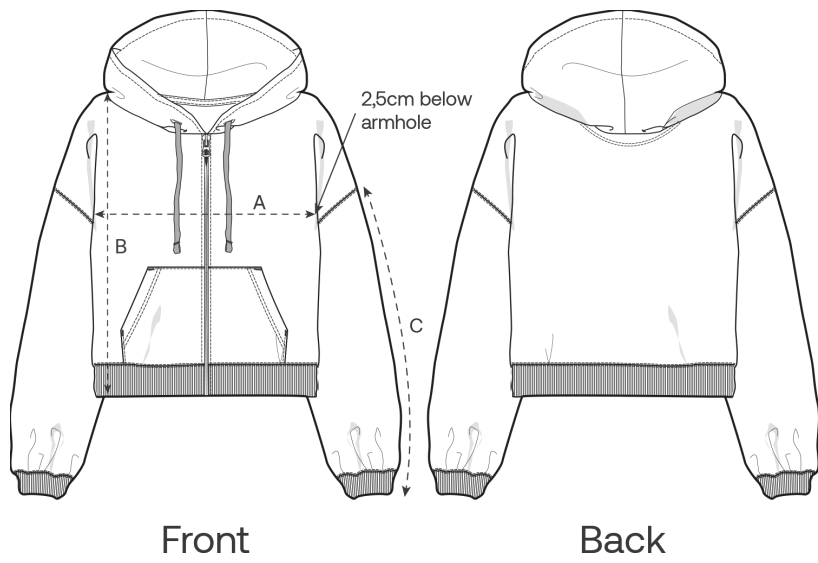
Blue Ice  
C728

Essential Heathers



Cool  
Heather  
Grey  
C146

Size Guide



Measurement in cm	XS	S	M	L	XL	XXL
A - Half Chest	57	60	63	66	69	73
B - Body Length	54	57	59	61	63	65
C - Sleeve Length	46	47.5	49	50.5	52	52

Packing

Sizes	XS	S	M	L	XL	XXL
Pieces / bag	5	5	5	5	5	5
Pieces / box	20	20	20	20	20	20

Environmental impact

Please note that the table below shows data for an adult in size M.

Carbon emission in Kg CO2eq	Natural Raw	Eco-heather	Whites & Colours	Heathers*
From cradle to gate <sup>1</sup>	5.4	-	6.83	6.97
From cradle to grave <sup>2</sup>	8.35	-	9.78	9.92

Water usage in m³	Natural Raw	Eco-heather	Whites & Colours	Heathers*
From cradle to gate <sup>1</sup>	2.14	-	3.57	3.82
From cradle to grave <sup>2</sup>	3.8	-	5.24	5.48

1 - From the extraction of raw materials to the point it leaves the manufacturer.    2 - From the extraction of raw materials to the product end-of-life.    \* Except Heather Haze