



## The unisex tubular t-shirt

Medium Fit

XXS → 5XL

150 GSM

### Description

- 1x1 rib at neckline
- Self-fabric back neck tape
- Set-in sleeves
- Tubular construction for a seamless finish
- Wide twin-needle topstitching at sleeve cuffs and hem

### Composition

- Shell - Single Jersey
- 100% Cotton - Organic Ring Spun Combed - 150.0 GSM
- Fabric washed

### Care instruction

Wash similar colours together, no ironing on print, wash and iron inside out.



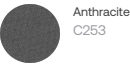
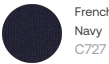
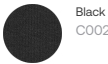
### Country of origin

- Weaving : Bangladesh
- Dyeing : Bangladesh
- Assembly : Bangladesh

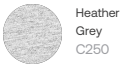
Whites



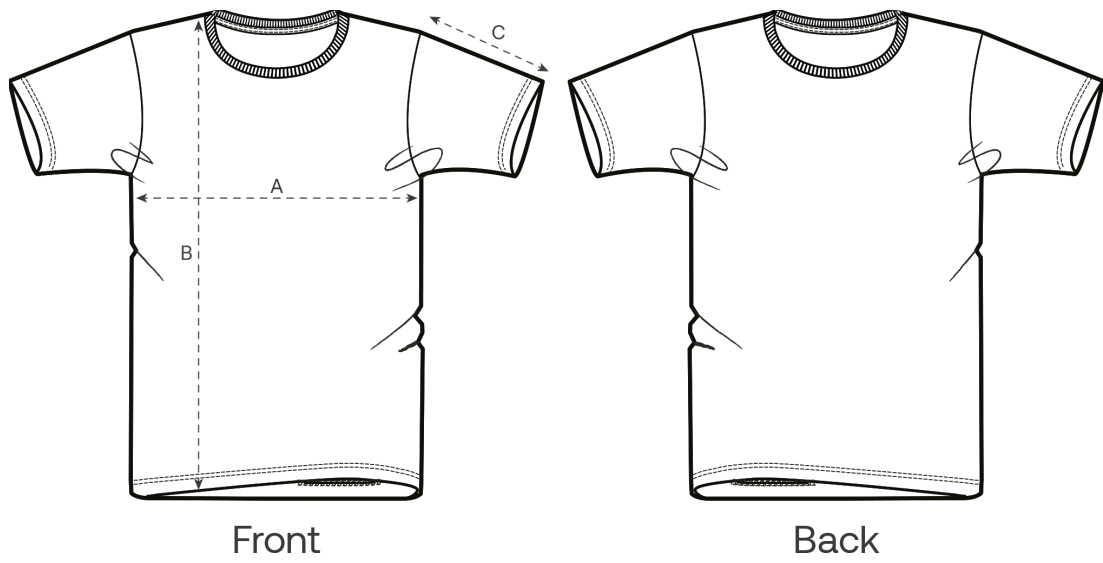
Colors



Essential Heathers



Size Guide



Measurement in cm	XXS	XS	S	M	L	XL	XXL	3XL	4XL	5XL
A - Half Chest	45	47	50	53	56	59	62	65	70	75
B - Body Length	64	66	69	72	74	76	78	80	82	84
C - Sleeve Length	18.5	19	20	21	22	22	23	24	24	24.5

Packing

Sizes	XXS	XS	S	M	L	XL	XXL	3XL	4XL	5XL
Pieces / bag	10	10	10	10	10	10	10	10	10	10
Pieces / box	100	100	100	100	100	100	100	100	50	50

Environmental impact

Please note that the table below shows data for an adult in size M.

Carbon emission in Kg CO2eq	Natural Raw	Eco-heather	Whites & Colours	Heathers*
From cradle to gate <sup>1</sup>	-	-	1.84	1.86
From cradle to grave <sup>2</sup>	-	-	3.89	3.91

Water usage in m³	Natural Raw	Eco-heather	Whites & Colours	Heathers*
From cradle to gate <sup>1</sup>	-	-	0.88	0.94
From cradle to grave <sup>2</sup>	-	-	2.03	2.09

1 - From the extraction of raw materials to the point it leaves the manufacturer. 2 - From the extraction of raw materials to the product end-of-life. \* Except Heather Haze