



The Men's Denim Shirt

Medium Fit

S → 5XL

235 GSM

Description

- Button down collar with single needle topstiches
- Collar stand
- Front placket single needle topstiches on each side
- Forwarded shoulder
- Back yoke
- Inside yoke in self fabric
- Set-in sleeves
- Sleeve placket with one button
- Cuff with two buttons
- Rounded cuff corners
- Double pleats at cuff seam
- Faded look on all seams due to garment washing
- Indigo yarn dyed product, each garment may vary in appearance, colour may bleed, follow our care label
- Read carefully print recommendations

Composition

Shell - Woven denim  
100% Cotton - Organic Ring Spun Carded - 235.0 GSM  
Garment washed

Care instruction

Wash similar colours together, no ironing on print, wash and iron inside out.



Country of origin

Weaving : Bangladesh  
Dyeing : Bangladesh  
Assembly : Bangladesh

Colors

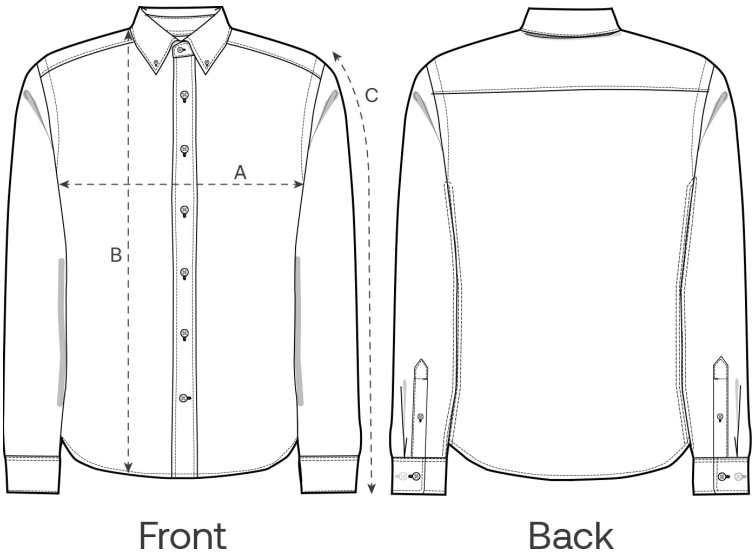


Light Wash  
C370



Mid Wash  
C371

Size Guide



Measurement in cm	S	M	L	XL	XXL	3XL	4XL	5XL
A - Half Chest	53.5	56	60	64	68	72	77	82
B - Body Length	73.8	75	77	79	81	83	85	85
C - Sleeve Length	66	66.5	67.5	68.5	69.5	70.5	71.5	71.5

Packing

Sizes	S	M	L	XL	XXL	3XL	4XL	5XL
Pieces / bag	5	5	5	5	5	5	5	5
Pieces / box	25	25	25	25	25	15	15	15