



The Women's Denim Shirt

Medium Fit XS → 3XL 235 GSM

Description

- Point collar with single needle topstiches
- Collar stand with one contrast button
- Front placket with single needle topstiches on each side
- Forwarded shoulder
- Back yoke
- Inside yoke in self fabric
- Set-in sleeves
- Sleeve placket with one button
- Cuff with two buttons
- Straight cuff corners
- Double pleats at cuff seam
- Faded look on all seams due to garment washing
- Indigo yarn dyed product, each garment may vary in appearance, colour may bleed, follow our care label
- Read carefully print recommendations



Composition

Shell - Woven denim
100% Cotton - Organic Ring Spun Carded - 235.0 GSM
Garment washed

Care instruction

Wash similar colours together, no ironing on print, wash and iron inside out.



Country of origin

Weaving : Bangladesh
Dyeing : Bangladesh
Assembly : Bangladesh

Colors

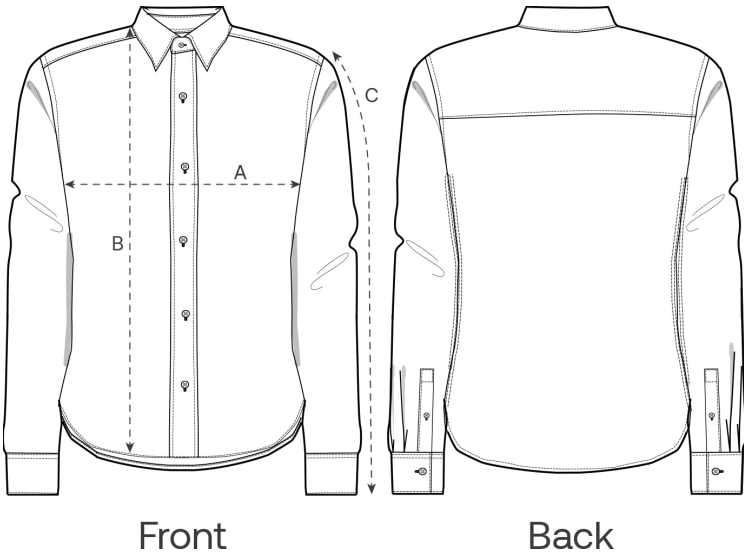


Light Wash
C370



Mid Wash
C371

Size Guide



Measurement in cm	XS	S	M	L	XL	XXL	3XL
A - Half Chest	47	50	53	56	59	62	66
B - Body Length	64.8	66.5	68.5	70.5	72.5	74.5	76.5
C - Sleeve Length	58.5	59	60	61	62	63	64

Packing

Sizes	XS	S	M	L	XL	XXL	3XL
Pieces / bag	5	5	5	5	5	5	5
Pieces / box	25	25	25	25	25	25	15